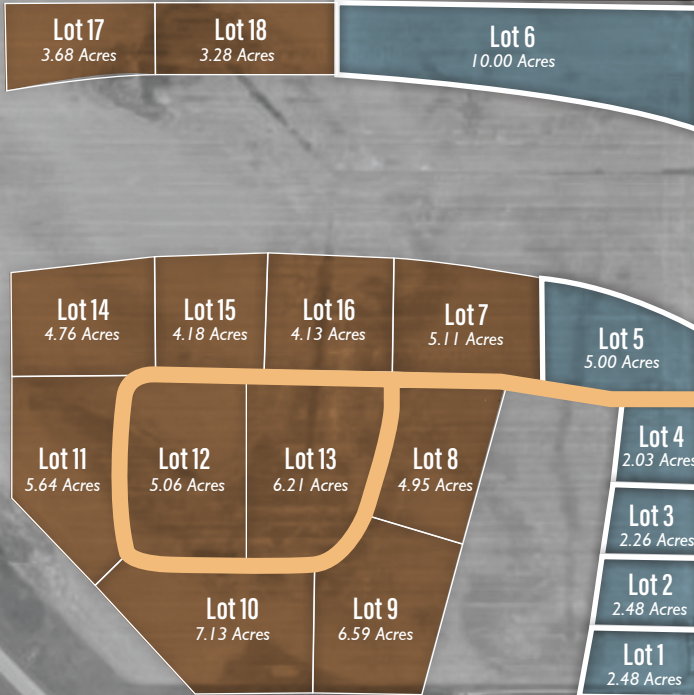


Wall Industrial Park

WALL, SOUTH DAKOTA 24293



234th Avenue



- Available Lots
- Future Lots*
- Existing Roadway
- Proposed Roadway*
- Proposed Property Line

** Exact future roadway alignment and parcel layout to be determined with future phase development*



← 50 Miles to Rapid City



Airport Road

PROPERTY IDEAL FOR
General Industrial Uses



Check out the property!

bit.ly/Wall-Industrial-Park



Close Proximity to Interstate 90



Great Accessibility



Large Lots



Local Incentives

Contact Us or Visit Our Website:
Liliya Stone | 605.279.2658
walledd@gwtc.net
wallsdedc.com