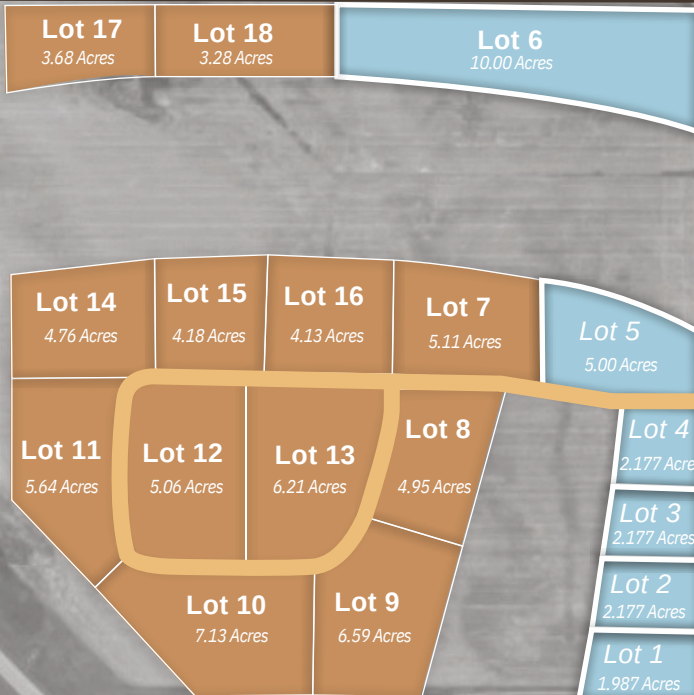


Wall Industrial Park

WALL, SOUTH DAKOTA 57790

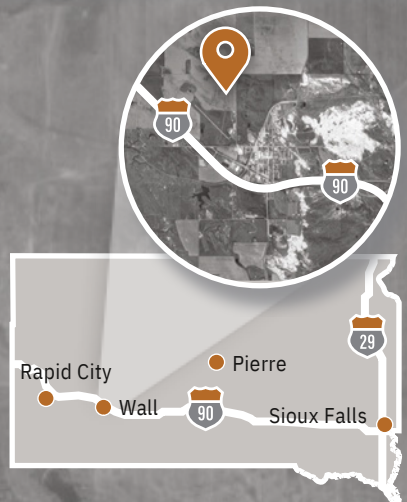


234th Avenue



- Available Lots
- Future Lots*
- Existing Roadway
- Proposed Roadway*
- Proposed Property Line

* Exact future roadway alignment and parcel layout to be determined with future phase development



50 Miles to Rapid City



Airport Road

PROPERTY IDEAL FOR

General Industrial Uses



Check out the property!

bit.ly/Wall-Industrial-Park

Contact Us or Visit Our Website:

Kallie Ruland | 605.279.2658

walledd@gwtdc.net

wallsdedc.com



Close proximity to Interstate 90



Great Accessibility



Large Lots



Local Incentives